

MAPLE III

DUBAI HILLS ESTATE

 EMAAR |  MERAAS



CONTEMPORARY
Garden View
Type 3





MODERN
Street View
Type 3



MODERN
Garden View
Type 3

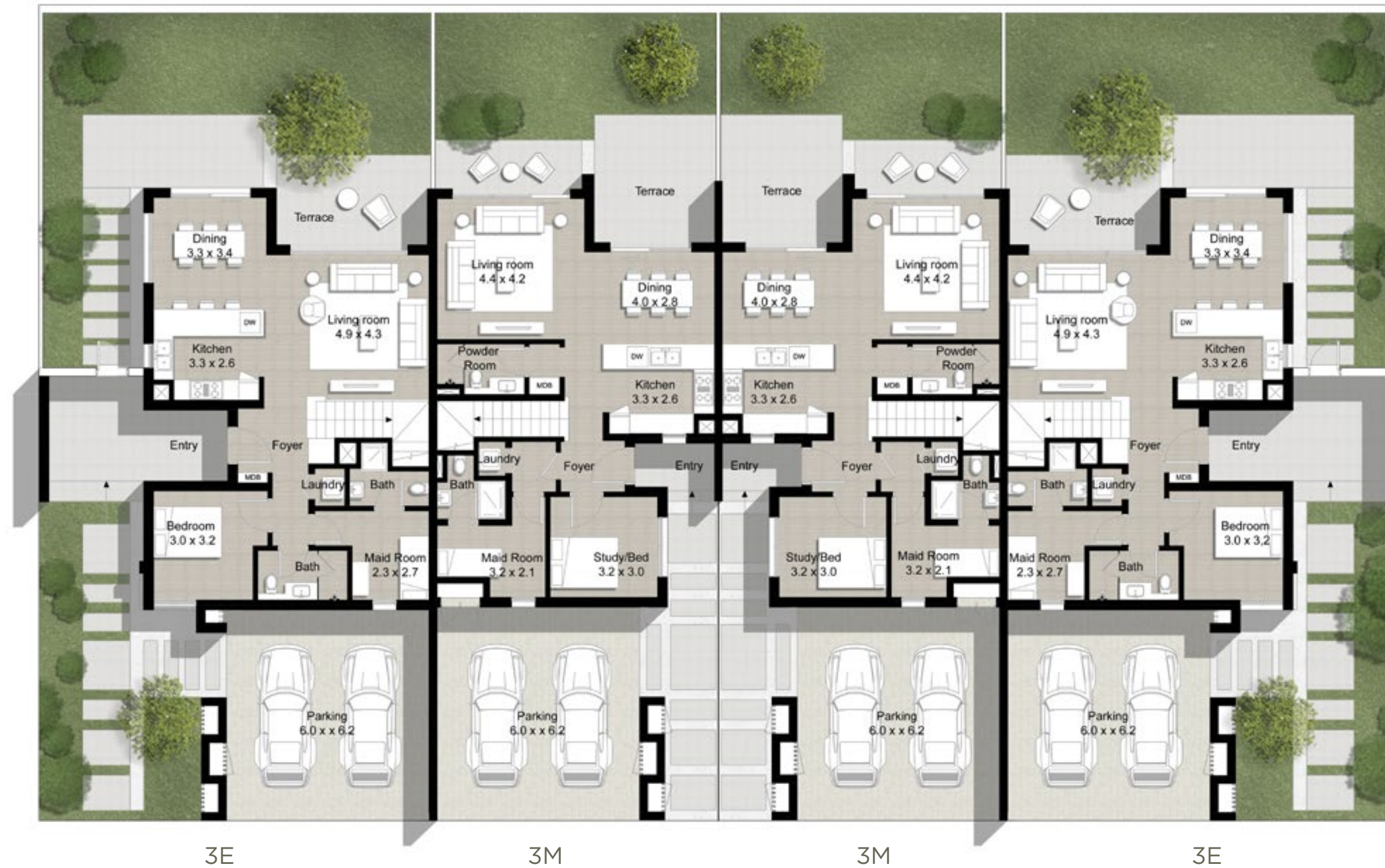


TYPE 3

Cluster of 4 Units

Unit 3E
5 Bedroom
Total Area: 2,726 sq ft

Unit 3M
4 Bedroom
Total Area: 2,418 sq ft



Ground Level



Upper Level



CONTEMPORARY
Street View
Type 3



CONTEMPORARY
Garden View
Type 3





MODERN
Street View
Type 3



MODERN
Garden View
Type 3



MAPLE III

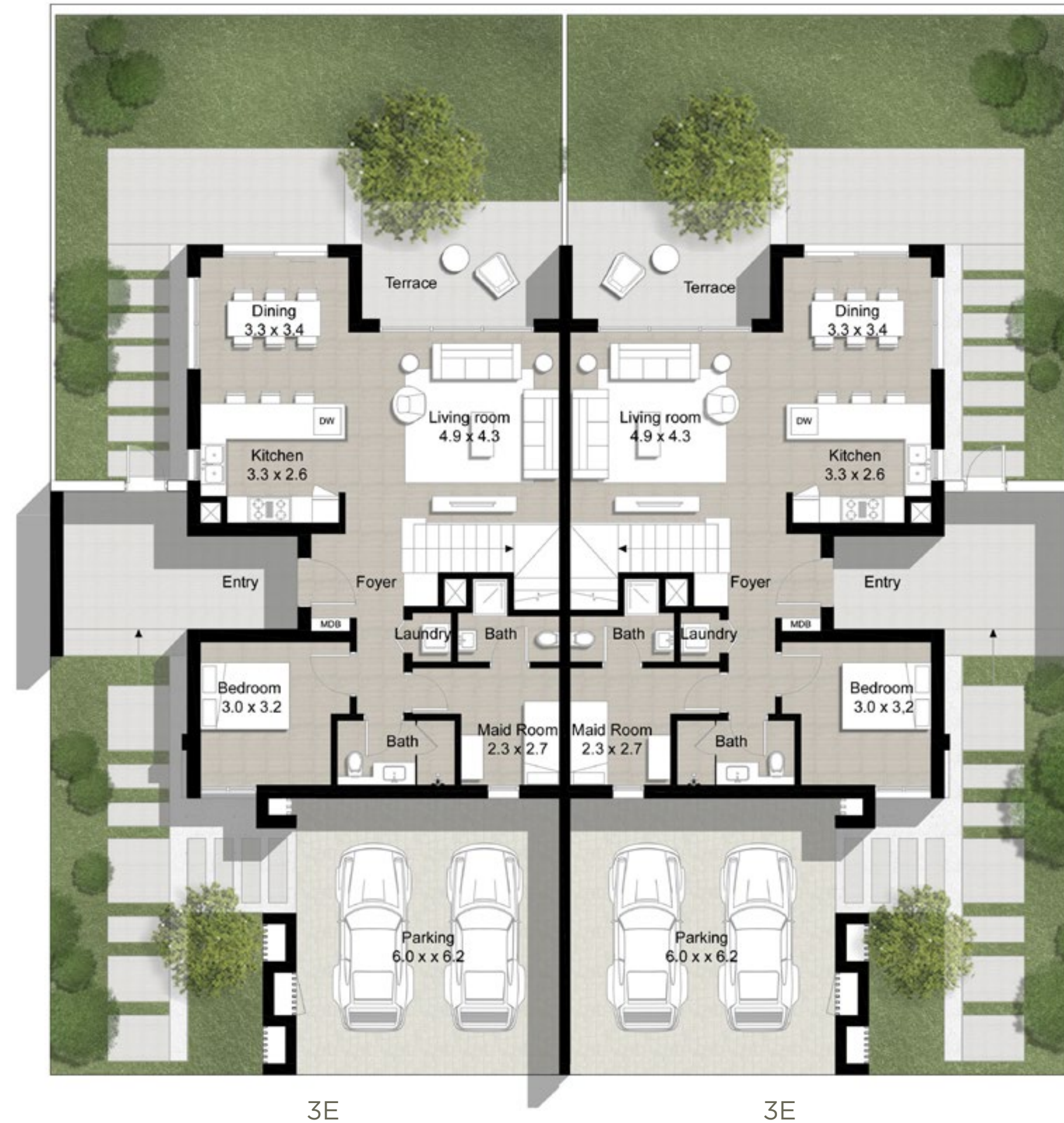
TYPE 3

Cluster of 2 Units

Unit 3E

5 Bedroom

Total Area: 2,726 sq ft

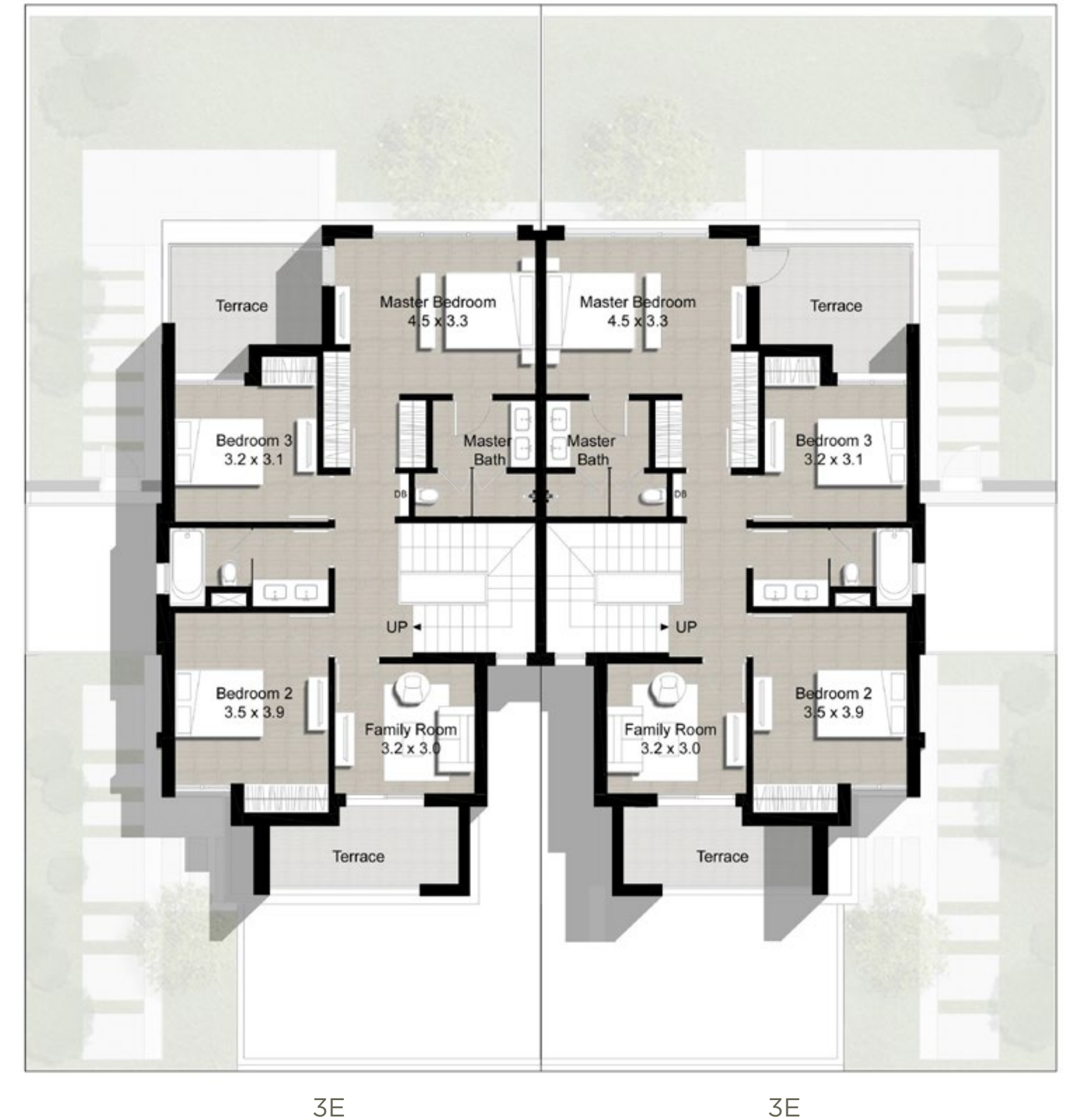


3E

3E

Ground Level

DUBAI HILLS ESTATE



3E

3E

Upper Level

FLOOR PLAN 1. All dimensions are in imperial and metric, and measured from finish to finish excluding construction tolerances. 2. All materials, dimensions, and drawings are approximate only. 3. Information is subject to change without notice, at developer's absolute discretion. 4. Actual area may vary from the stated area. 5. Drawings not to scale. 6. All images used are for illustrative purposes only and do not represent the actual size, features, specifications, fittings, and furnishings. 7. The developer reserves the right to make revisions / alterations, at its absolute discretion, without any liability whatsoever.



CONTEMPORARY
Street View
Type 2



CONTEMPORARY
Garden View
Type 2





MODERN
Street View
Type 2





MODERN
Garden View
Type 2

TYPE 2 Cluster of 4 Units

Unit 2E
4 Bedroom
Total Area: 2,471 sq ft

Unit 2M
3 Bedroom
Total Area: 2,266 sq ft



Ground Level



Upper Level



CONTEMPORARY
Street View
Type 2



CONTEMPORARY
Garden View
Type 2





MODERN
Street View
Type 2





MODERN
Garden View
Type 2



MAPLE III

DUBAI HILLS ESTATE

TYPE 2

Cluster of 2 Units

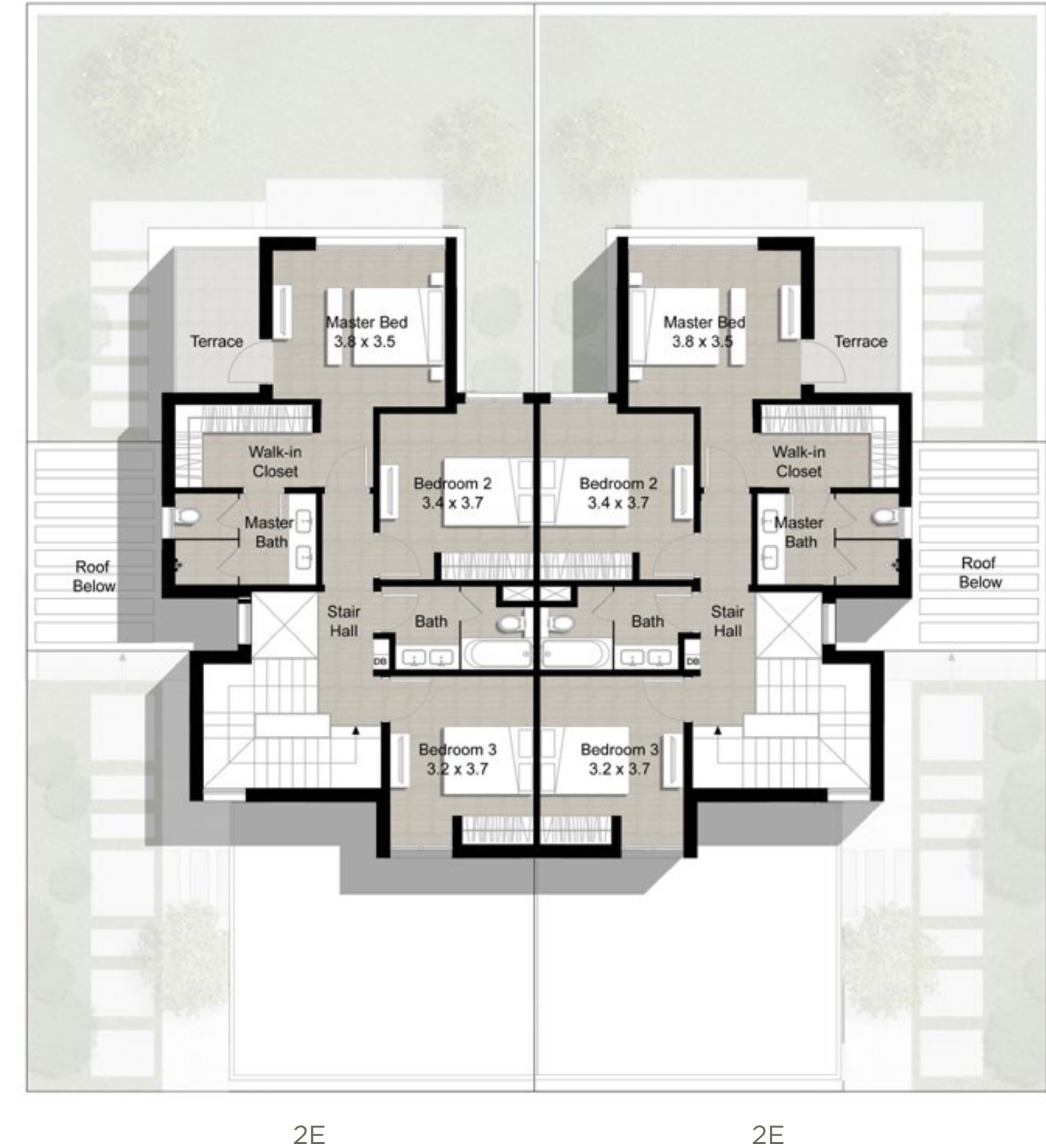
Unit 2E

4 Bedroom

Total Area: 2,471 sq ft



Ground Level



Upper Level

FLOOR PLAN 1. All dimensions are in imperial and metric, and measured from finish to finish excluding construction tolerances. 2. All materials, dimensions, and drawings are approximate only. 3. Information is subject to change without notice, at developer's absolute discretion. 4. Actual area may vary from the stated area. 5. Drawings not to scale. 6. All images used are for illustrative purposes only and do not represent the actual size, features, specifications, fittings, and furnishings. 7. The developer reserves the right to make revisions / alterations, at its absolute discretion, without any liability whatsoever.





Al Khail Road

Latifa Bint Hamdan St.

PARK POINT

PARK HEIGHTS

ACACIA

PARK POINT 2

THE PARKWAY

MULBERRY 1

MULBERRY 2

PARKWAY VISTAS

SIDRA II

HILLS GROVE

THE FAIRWAY

HILLS VIEW

SIDRA I

MAPLE III

FAIRWAY VISTAS

MAPLE II

MAPLE I

DUBAI HILLS ESTATE

R 1,000

- 01 - Community Park
- 02 - Regional Park
- 03 - Golf Club
- 04 - Golf Academy
- 05 - Driving Range
- 06 - Tennis Academy
- 07 - Schools
- 08 - Hotels
- 09 - Juma Mosque
- 10 - Metro Station
- 11 - Maple I, II, III
- 12 - Villa Community
- 13 - Private Hospital
- 14 - Government Hospital
- 15 - Civil Defence
- 16 - Police
- 17 - Community Retail
- 18 - Golf Villas
- 19 - Golf Apartments
- 20 - Park Heights I & II

MAPLE III



- Contemporary
- Modern



DUBAI HILLS ESTATE

MAPLE III

For more information on **Maple III** at **Dubai Hill Estate**, please call 800 36227(UAE) or +971 4 366 1668 (International). Visit our online sales centre at emaar.com or any of our sales centres across the UAE.

DUBAI

Dubai Hills Estate Sales Pavillion: Umm Suqeim Road
Emaar Sales Center: Downtown Dubai
Dubai Creek Harbour Sales Centre: Ras Al Khor

ABU DHABI

Emaar Sales Centre: Al Nahda Tower, Ground Floor, 4th Street,
Corniche, Al Muroor Road

Open from Saturday - Thursday, from 8.30am - 6pm

دبي هيلز استيت

ميبل III

للمزيد من المعلومات حول **ميبل III** في **دبي هيلز استيت**، الرجاء الاتصال بالرقم (٨٠٠٣٦٢٢٧) في الإمارات العربية المتحدة أو +٩٧١ ٤ ٣٦٦١٦٦٨ (دولي) أو قم بزيارة مركز مبيعاتنا الإلكتروني على الموقع emaar.com

دبي

مركز مبيعات دبي هيلز استيت على طريق أم سقيم
مركز مبيعات إعمار في وسط مدينة دبي
مركز مبيعات خور دبي في رأس الخور

أبوظبي

مركز مبيعات إعمار في برج النهضة، الشارع الرابع،
الكورنيش، طريق المرور - أبوظبي

السبت إلى الخميس من الساعة ٨:٣٠ صباحاً حتى الساعة ٦ مساءً